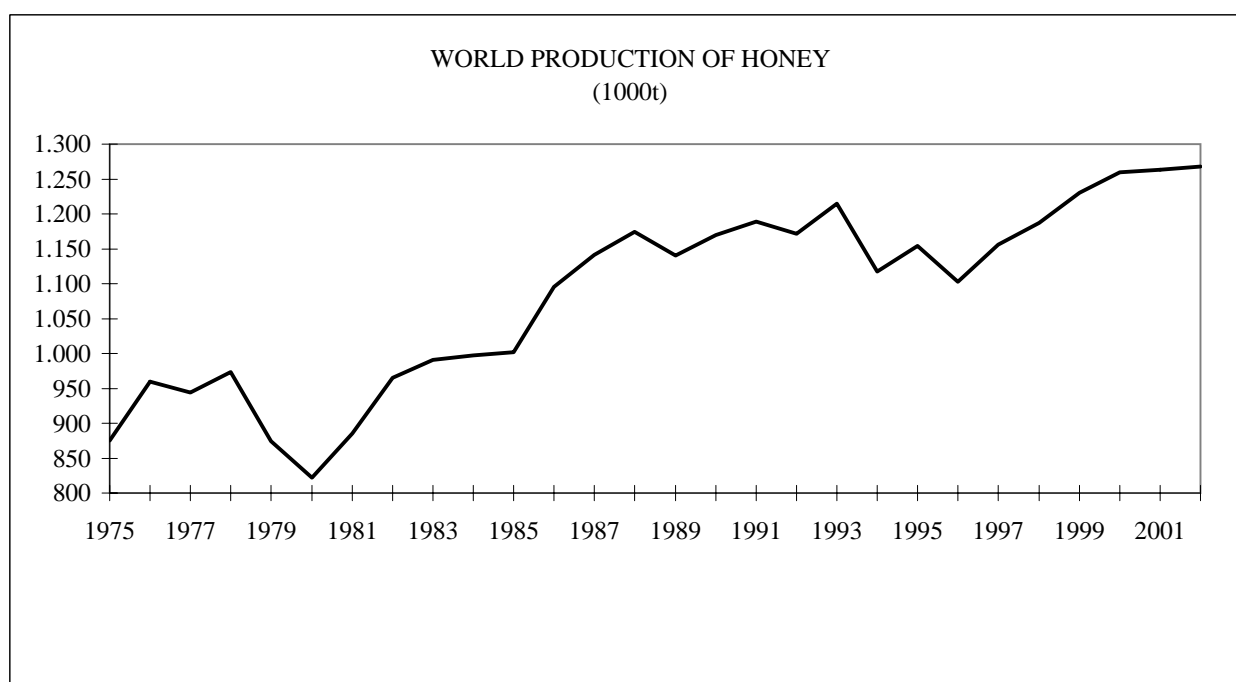


Table 1. World production by region (1000t)

	1998	1999	2000	2001	2002
Africa	139	141	144	145	145
North and Central America	218	203	208	208	210
South America	109	133	141	127	124
Asia	400	431	447	454	459
Europe	291	294	291	300	301
Oceania	31	29	29	29	29
TOTAL	1.187	1.230	1.260	1.263	1.268

Source: FAO

Figure 1. World production of honey (1000t)



Source: FAO

Table 2. World production of honey by country (1000t)

	1998		1999		2000	2001	2002
China	211	(155)	236	(180)	252	255	258
Former Soviet Union	134		132		125	137	136
USA	100		94	(90)	100	100	100
Argentina	75	(75)	93		98	90	85
Turkey	67		67		60	60	60
Ukraine	59		55		52	60	60
Mexico	55		55		59	59	61
India	51		51		52	52	52
Canada	46		37		31	32	32
Australia	22		19		21	21	21
Brazil	18		20		22	20	15
Hungary	17		16		15	11	16
Other	222		238		259	253	260
European Union	109		117		114	113	112
TOTAL	1.187		1.230		1.260	1.263	1.268

Source: FAO; () = US Department of Agriculture

Table 3. World exports of honey

	1997		1998		1999		2000		2001	
	<i>1000t</i>	<i>1000\$</i>	<i>1000t</i>	<i>1000\$</i>	<i>1000t</i>	<i>1000\$</i>	<i>1000t</i>	<i>1000\$</i>	<i>1000t</i>	<i>1000\$</i>
China	48	69	79	87	87	79	103	87	107	99
Argentina	70	108	68	89	93	96	88	87	73	71
Mexico	27	41	32	42	22	25	31	35	23	28
USA	4	8	5	9	5	9	5	8	4	6
Canada	8	17	11	20	15	21	15	21	13	21
Other	75	132	67	123	72	112	77	104	88	128
EU extra-Community trade	7		6		6		6		7	
EU intra-Community trade	29	86	38	89	40	88	45	95	45	87
TOTAL	269	461	307	458	340	430	370	437	360	440
\$kg	1,71		1,49		1,26		1,18		1,22	

Sources: FAO + Comext

() = total intra + extra

Note: FAO data on total volume of imports (see Table 4) and total volume of exports are not fully compatible

Table 4. World imports of honey

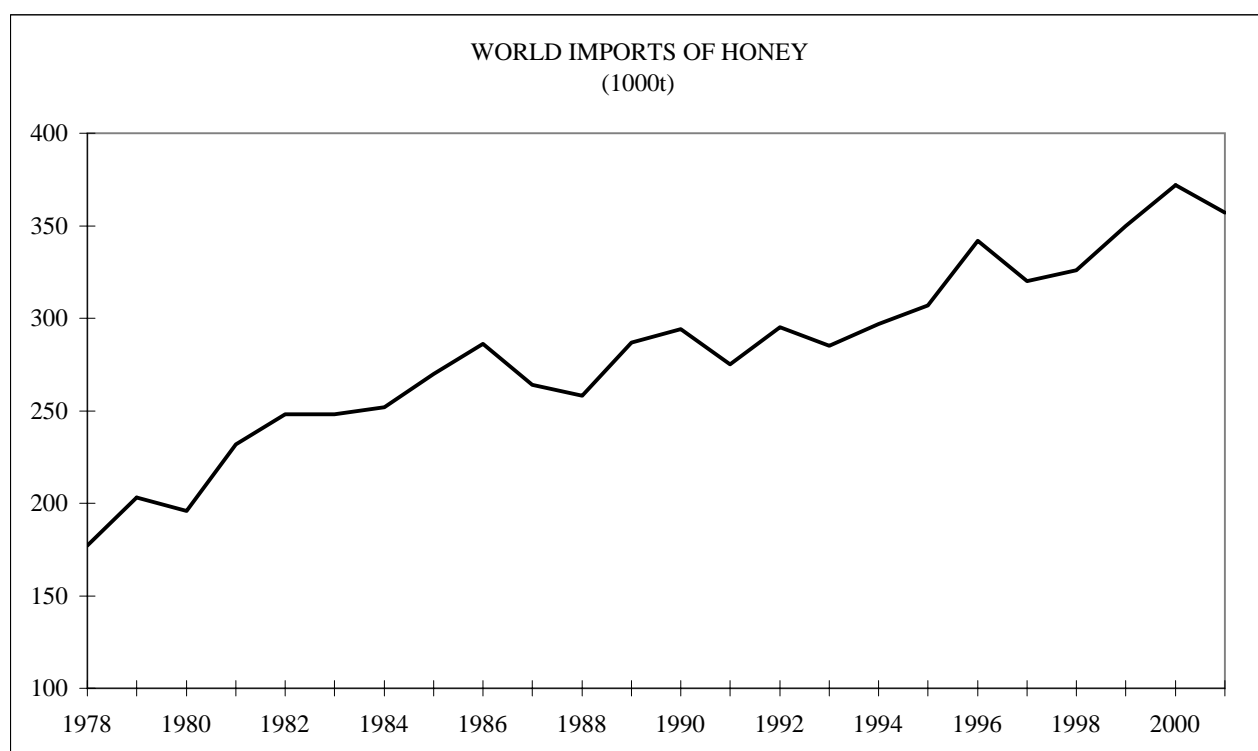
	1997		1998		1999		2000		2001	
	1000t	1000\$	1000t	1000\$	1000t	1000\$	1000t	1000\$	1000t	1000\$
USA	76	125	60	81	83	92	90	96	66	76
Japan	34	50	29	35	35	36	40	39	40	42
China	2	2	2	2	3	3	4	3	2	2
Canada	2	3	2	3	3	3	3	3	5	5
Other	41	83	41	73	34	67	37	68	44	93
EU extra-Community trade	134	278	152	293	151	252	157	231	158	242
EU intra-Community trade	31		40		41		41		42	
TOTAL	320	541	326	487	350	453	372	440	357	460
\$kg	1,69		1,49		1,30		1,18		1,29	

Sources: FAO + Comext

() = total intra + extra

Note: FAO data on total volume of imports and total volume of exports (see Table 3) are not fully compatible

Figure 2. World imports of honey (1000 t)



Sources: FAO

Table 5. Honey supply balance

	EUR 15	BLEU	DK	DE	EL	ES	FR	IE	IT	NL	AT	PT	FI	SE	UK
1999/2000															
Usable output (1 000 t)	132,2	2,0	2,0	20,0	14,0	31,0	(27,0)	0,1	10,0	0,1	9,0	(11,0)	2,0	1,0	3,0
Total imports	162,4	10,0	5,0	90,0	2,0	14,0	16,0	1,2	14,0	8,0	6,0	1,0	1,0	3,0	24,0
Total exports	13,1	4,0	3,0	22,0	1,0	7,0	3,0	0,1	3,0	1,0	0,6	0,1	0,1	0,0	1,0
Intra-EC trade (imp.)	32,8	4,0	3,0	5,0	1,0	2,0	5,0	0,4	2,0	4,0	3,0	1,0	0,4	0,0	2,0
Domestic consumption - human consumption	281,5	8,0	4,0	88,0	15,0	38,0	40,0	1,2	21,0	7,1	14,4	11,9	2,9	4,0	26,0
Human consumption (kg per capita)	0,7	0,7	0,8	1,1	1,4	1,0	0,7	0,3	0,4	0,4	1,8	1,2	0,6	0,4	0,4
Self-sufficiency (%)	47,0	25,0	50,0	22,7	93,3	81,6	67,5	8,3	47,6	1,4	62,5	92,4	69,0	25,0	11,5
2000/2001															
Usable output (1 000 t)	125,2	2,0	2,0	20,0	14,0	(33,0)	(25,0)	0,1	(9,0)	0,1	9,0	4,0	1,0	3,0	3,0
Total imports	159,2	11,0	3,0	94,0	1,0	14,3	15,8	1,1	12,0	7,0	5,0	2,0	1,0	2,0	24,0
Total exports	14,8	6,0	2,0	23,0	0,9	8,2	2,9	0,1	2,0	1,0	0,6	1,0	0,1	0,0	1,0
Intra-EC trade (imp.)	34,0	4,0	2,0	5,0	0,2	2,0	5,0	0,4	1,0	5,0	2,0	2,0	0,5	2,0	3,0
Domestic consumption - human consumption	269,7	7,0	3,0	91,0	14,1	39,1	37,9	1,1	19,0	6,1	13,4	5,0	1,9	5,0	26,0
Human consumption (kg per capita)	0,7	0,7	0,6	1,1	1,3	1,0	0,6	0,3	0,3	0,4	1,6	0,5	0,4	0,6	0,4
Self-sufficiency (%)	46,4	28,6	66,7	22,0	99,0	84,4	65,9	9,1	47,4	1,6	67,2	80,0	52,6	60,0	11,5
2001/2002															
Usable output (1 000 t)	131,2	2,0	2,0	26,0	14,0	33,0	(25,0)	0,1	9,0	0,1	9,0	4,0	1,0	3,0	3,0
Total imports	169,2	9,0	6,0	99,0	3,0	13,4	16,0	1,8	12,1	6,1	4,6	2,0	1,0	3,0	31,0
Total exports	14,5	6,0	2,0	24,0	0,5	10,4	3,0	0,3	3,9	0,5	0,8	1,0	0,0	0,0	1,0
Intra-EC trade (imp.)	38,9	3,0	2,0	5,0	1,0	3,6	6,0	0,5	1,0	4,9	2,5	2,0	0,5	2,0	5,0
Domestic consumption - human consumption	285,9	5,0	6,0	101,0	16,5	36,0	38,0	1,7	17,1	5,7	12,8	5,0	2,0	6,0	33,0
Human consumption (kg per capita)	0,8	0,5	1,1	1,2	1,5	0,9	0,6	0,5	0,3	0,4	1,3	0,6	0,4	0,7	0,6
Self-sufficiency (%)	45,9	40,0	33,3	25,7	84,8	91,7	65,8	6,0	52,5	1,7	70,2	80,0	49,7	50,0	9,1

Sources: Eurostat (Cronos)
() = Member States
italics = estimated by DG AGRI

Table 6. European Union imports of honey (1000t)

<i>EUR15</i>						
Origin	1997	1998	1999	2000	2001	2002
Argentina	17.953	29.768	45.375	42.576	46.540	56.471
Mexico	16.364	18.569	19.097	21.477	17.780	18.516
Hungary	8.729	6.336	8.011	11.016	10.364	15.157
China	46.679	55.529	34.997	33.573	37.054	13.753
Turkey	5.997	5.558	3.298	2.976	2.699	9.678
Romania	8.402	4.226	7.018	8.881	6.533	5.035
Brasil	0	6	62	82	568	4.512
Cuba	3.453	4.126	4.206	5.493	5.846	4.377
Chile	1.181	2.706	2.515	3.012	4.460	3.985
Uruguay	5.396	3.630	6.875	4.075	6.687	3.730
Bulgaria	3.781	1.838	2.499	5.144	2.626	3.302
Others	15.944	20.078	17.358	18.421	17.276	16.588
TOTAL	133.879	152.371	151.311	156.726	158.434	155.104

<i>GERMANY</i>						
Origin	1997	1998	1999	2000	2001	2002
Argentina	8.841	15.457	27.328	27.792	27.754	32.660
Mexico	12.167	13.597	14.298	16.048	13.115	13.109
China	25.447	29.093	12.552	9.930	11.462	7.197
Hungary	3.416	1.777	2.373	3.595	3.620	6.823
Turkey	5.506	5.005	2.629	2.444	2.092	5.098
Brasil	0	6	21	82	502	3.901
Uruguay	4.443	3.395	5.587	3.704	5.987	3.617
Chile	1.085	2.476	2.209	2.618	4.014	3.550
Romania	5.246	2.907	4.901	6.969	4.670	3.130
Cuba	1.833	1.804	1.721	3.193	3.210	2.026
Czech Republic	600	720	800	1.490	1.341	1.639
Others	10.693	12.705	11.036	12.615	10.917	10.002
TOTAL	79.276	88.941	85.455	90.478	88.683	92.754

<i>UNITED KINGDOM</i>						
Origin	1997	1998	1999	2000	2001	2002
Argentina	2.426	2.298	3.526	2.216	3.690	10.320
Mexico	3.039	3.480	2.935	3.044	2.664	4.069
China	8.787	10.944	9.436	10.203	10.910	2.324
Australia	1.852	2.446	1.773	1.645	1.862	1.704
Cuba	656	929	1.092	1.060	1.138	1.242
Others	3.023	2.132	2.039	2.182	2.922	3.863
TOTAL	19.783	22.228	20.802	20.350	23.186	23.522

Table 7. European Union exports of honey (1000t)

<i>EUR15: THIRD COUNTRIES</i>						
Destination	1997	1998	1999	2000	2001	2002
Switzerland	946	1.070	1.097	1.324	1.319	1.354
Saudi Arabia	1.260	644	1.222	737	942	1.026
United States	206	194	209	286	323	758
Morocco	193	217	212	500	399	283
Poland	289	481	482	427	404	238
Ceuta & Melilla	714	590	342	458	371	165
Others	2.993	2.558	2.362	2.001	2.969	4.380
TOTAL	6.602	5.754	5.926	5.733	6.728	8.203

<i>SPAIN</i>						
Destination	1997	1998	1999	2000	2001	2002
Algeria	347	253	155	271	342	503
Saudi Arabia	122	111	183	149	258	292
Morocco	74	174	138	365	332	229
Ceuta & Melilla	714	590	339	457	370	165
Others	974	805	544	455	667	1.184
TOTAL	2.231	1.932	1.359	1.697	1.969	2.374

<i>GERMANY</i>						
Destination	1997	1998	1999	2000	2001	2002
Saudi Arabia	1.085	453	946	548	658	682
Switzerland	516	541	477	470	393	453
United States	101	76	82	95	71	163
Poland	101	26	46	94	60	69
Others	1.024	744	865	649	866	1.018
TOTAL	2.828	1.839	2.416	1.855	2.049	2.385

Sources: Comext

Table 8. Inventory

1999	Hives		Beekeepers			No of hives per professional beekeeper
	total	profess.	total	profess.	% profess.	
B	100.000	-	11.000	-	-	-
DK	85.000	24.000	6.000	150	2,5	160
D	1.038.000	50.000	103.600	290	0,3	172
ELL	1.217.000	770.000	24.000	3.000	12,5	257
ESP	2.193.366	1.561.615	27.794	4.560	16,4	342
F	1.446.900	528.000	100.000	3.000	3,0	176
IRL	20.000	3.200	2.300	15	0,7	213
IT	1.100.000	300.000	75.000	1.100	1,5	273
LUX	10.213	240	650	1	0,2	240
NL	80.000	2.500	5.000	20	0,4	125
ÖST	377.664	30.000	25.527	150	0,6	200
PO	632.500	345.000	26.000	1.800	6,9	192
SUO	42.000	7.700	4.200	35	0,8	220
SVE	110.000	9.000	14.000	30	0,2	300
UK	200.000	40.000	35.000	200	0,6	200
EUR15	8.652.643	3.671.255	460.071	14.351	3,1	256

2003	Hives		Beekeepers			No of hives per professional beekeeper
	total	profess.	total	profess.	% profess.	
B	100.000	-	11.000	-	-	-
DK	155.000	24.000	6.000	150	2,5	160
D	900.000	50.000	103.600	290	0,3	172
ELL	1.380.000	770.000	22.000	4.000	18,2	193
ESP	2.397.840	1.771.358	27.420	4.476	16,3	396
F	1.297.000	528.000	100.000	3.000	3,0	176
IRL	20.000	3.200	2.300	15	0,7	213
IT	1.100.000	300.000	75.000	1.100	1,5	273
LUX	10.213	240	650	1	0,2	240
NL	80.000	5.000	10.000	25	0,3	200
ÖST	343.906	30.000	25.027	150	0,6	200
PO	632.500	345.000	26.000	1.800	6,9	192
SUO	42.000	7.700	4.200	35	0,8	220
SVE	145.000	9.000	14.000	30	0,2	300
UK	273.750	40.000	43.600	200	0,5	200
EUR15	8.877.209	3.883.498	470.797	15.272	3,2	254

Sources: COPA and Member States

Table 9. Selling prices * (EUR/kg)

	1.998	1.999	2.000	2.001	2.002
B ⁽¹⁾	7,00	7,00	8,00	8,00	8,00
DK	2,70	3,00	3,40	3,60	3,80
DE	6,70	6,65	6,72	6,76	6,76
ELL	3,82	4,02	4,26	4,34	4,34
ESP ⁽²⁾	1,88	1,88	1,48	1,32	1,36
FR					
IRL					
IT	2,93	2,93	2,90	2,86	3,32
LUX					
NL	4,50	5,40	6,00	6,00	5,95
OST	6,44	6,44	6,38	6,36	6,44
PT	2,50	2,60	2,62	2,,7	2,68
FIN					
SV	2,38	3,17	3,21	3,21	3,25
UK					
EUR15					

* Average ponderated prices by marketing stade

(1) Direct selling price (beekeeper-consumer)

(2) Selling price by cooperatives

Table 10. Average import prices (EUR/kg)

<i>EUR15</i>						
Origin	1997	1998	1999	2000	2001	2002
Argentina	1,35	1,18	1,04	1,09	1,15	1,50
Mexico	1,46	1,32	1,16	1,24	1,45	1,78
Hungary	1,61	1,90	1,66	1,41	1,71	2,57
China	1,16	1,03	0,84	0,82	0,93	1,07
Turkey	1,74	1,78	2,02	2,01	1,82	2,30
Romania	1,33	1,40	1,21	1,24	1,45	2,15
Brasil		1,35	1,01	1,31	1,33	1,59
Cuba	1,35	1,29	1,15	1,09	1,15	1,36
Chile	1,50	1,29	1,21	1,23	1,34	1,64
Uruguay	1,41	1,29	1,02	1,04	1,13	1,58
Bulgaria	1,14	1,11	1,09	1,05	1,36	1,85
Others	1,66	1,50	1,36	1,31	1,53	1,97
TOTAL	1,36	1,25	1,11	1,13	1,24	1,73

Figure 3. Expenditure forecasts by type of measure (EUR)

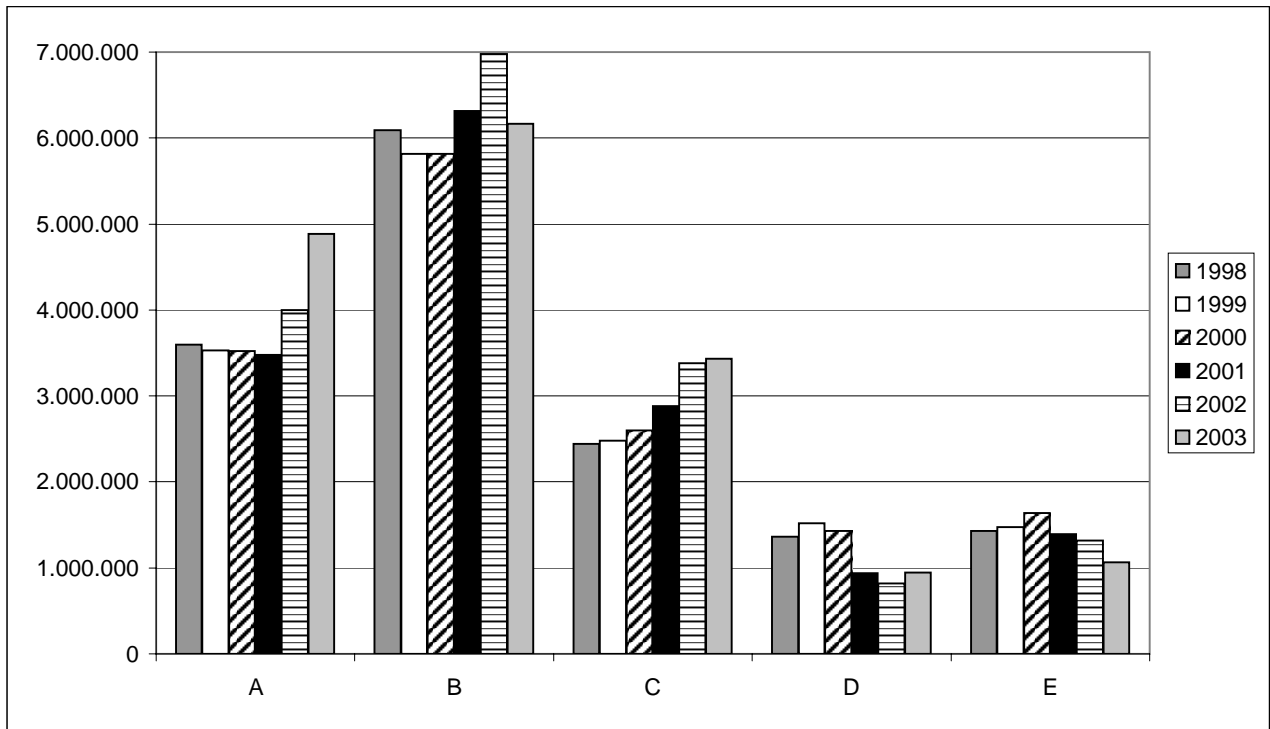


Figure 4. Implementation of expenditure by type of measure (EUR)

